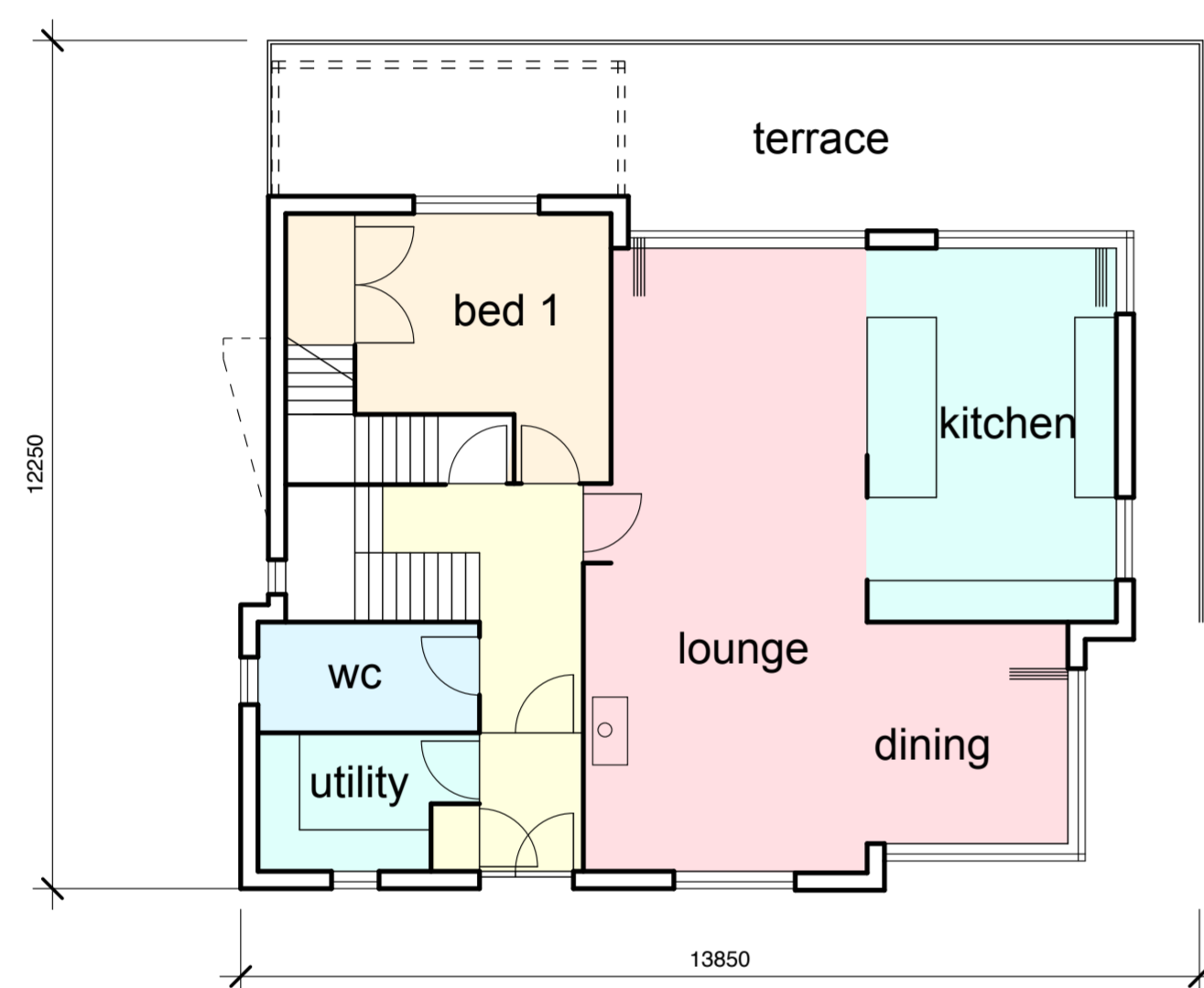
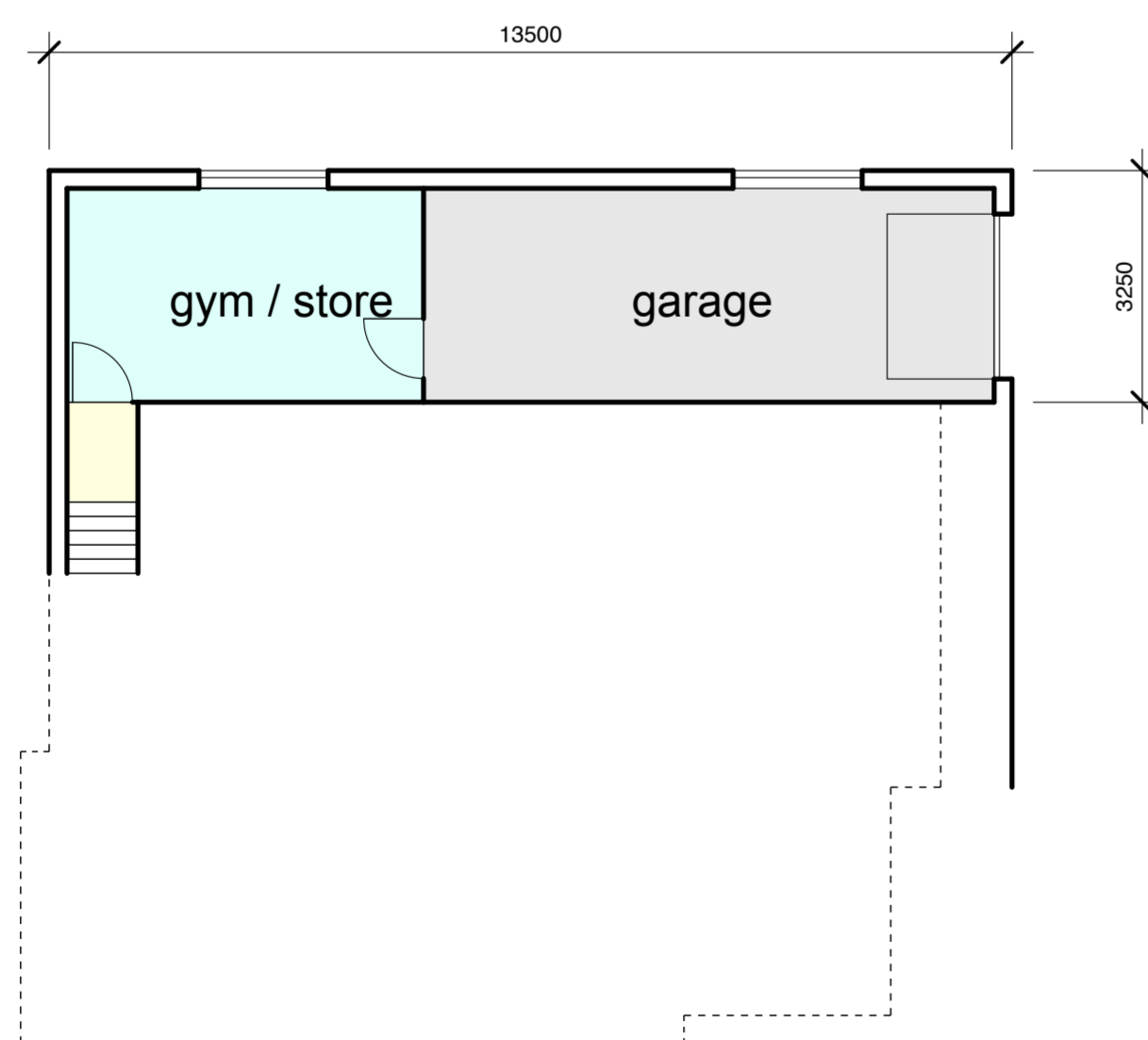


First Floor Plan 1:200
(as proposed)



Ground Floor Plan 1:200
(as proposed)



Lower Ground Floor Plan
(as proposed)

Notes		
<p>Copyright Robert Potter & Partners LLP 2018</p> <p>Do not scale dimensions from this drawing - if in doubt ask. All dimensions, including figured dimensions, to be checked on site prior to commencing any works.</p> <p>Dimensions indicated are purely for scaling purposes only.</p> <p>Drawing prepared without consultation with planning department.</p>		
Revisions	Date	Initials
Project		
<p>Proposed Dwelling House at Land at Glendroit, Kirkcudbright for Ms J. Primrose.</p>		
Drawing Title		
Plans as Proposed		
<p>ROBERT POTTER & PARTNERS CHARTERED ARCHITECTS & PROJECT MANAGERS</p>		
<p>7 MILLER ROAD, AYR KA7 2AX 01292 - 261228 49 NEWALL TERRACE, DUMFRIES DG1 1LN 01387 - 255509 87 HANOVER STREET, STRANRAER DG9 7FS 01776 - 703453 169 ELDERSLIE STREET, GLASGOW G3 7JR 0141 - 332 9111 2 KINGDOM STREET, LONDON W2 6BD 0203 - 4795931</p>		
Scale	1:100@A1	9332/04
Date	March 2018	
Drawn By		Revision
Checked By		

