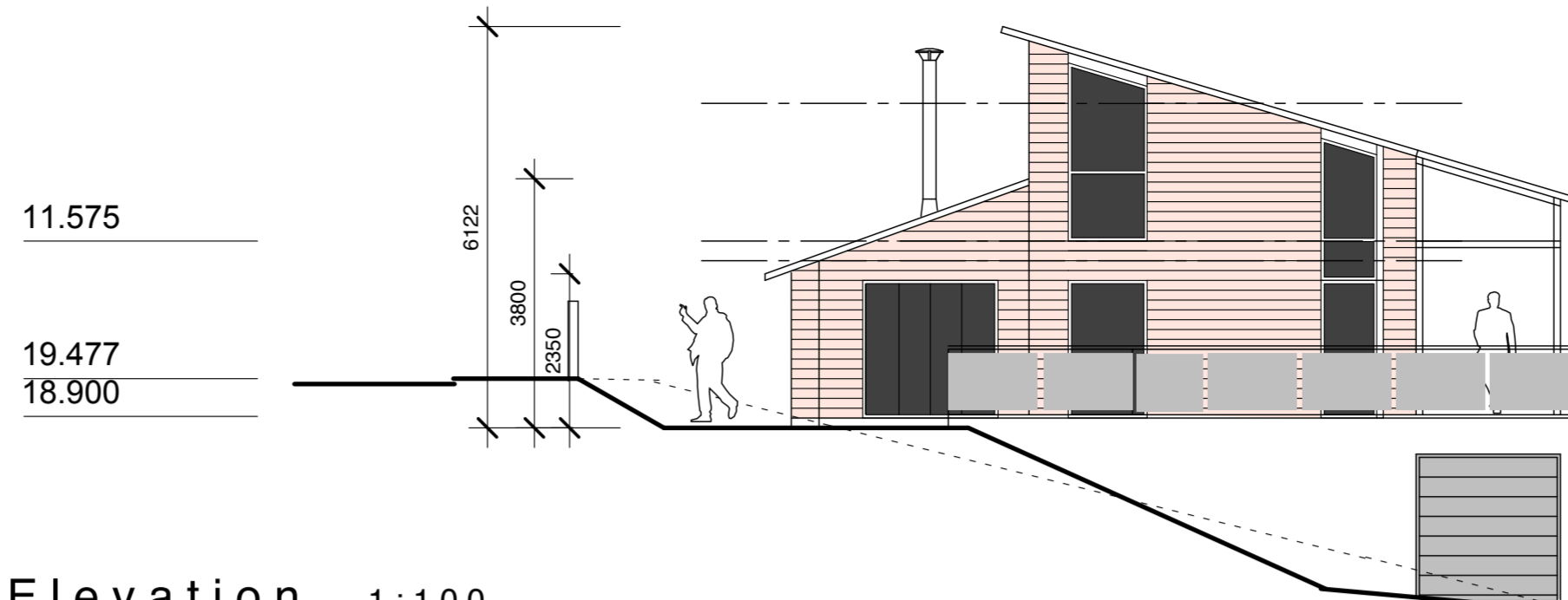
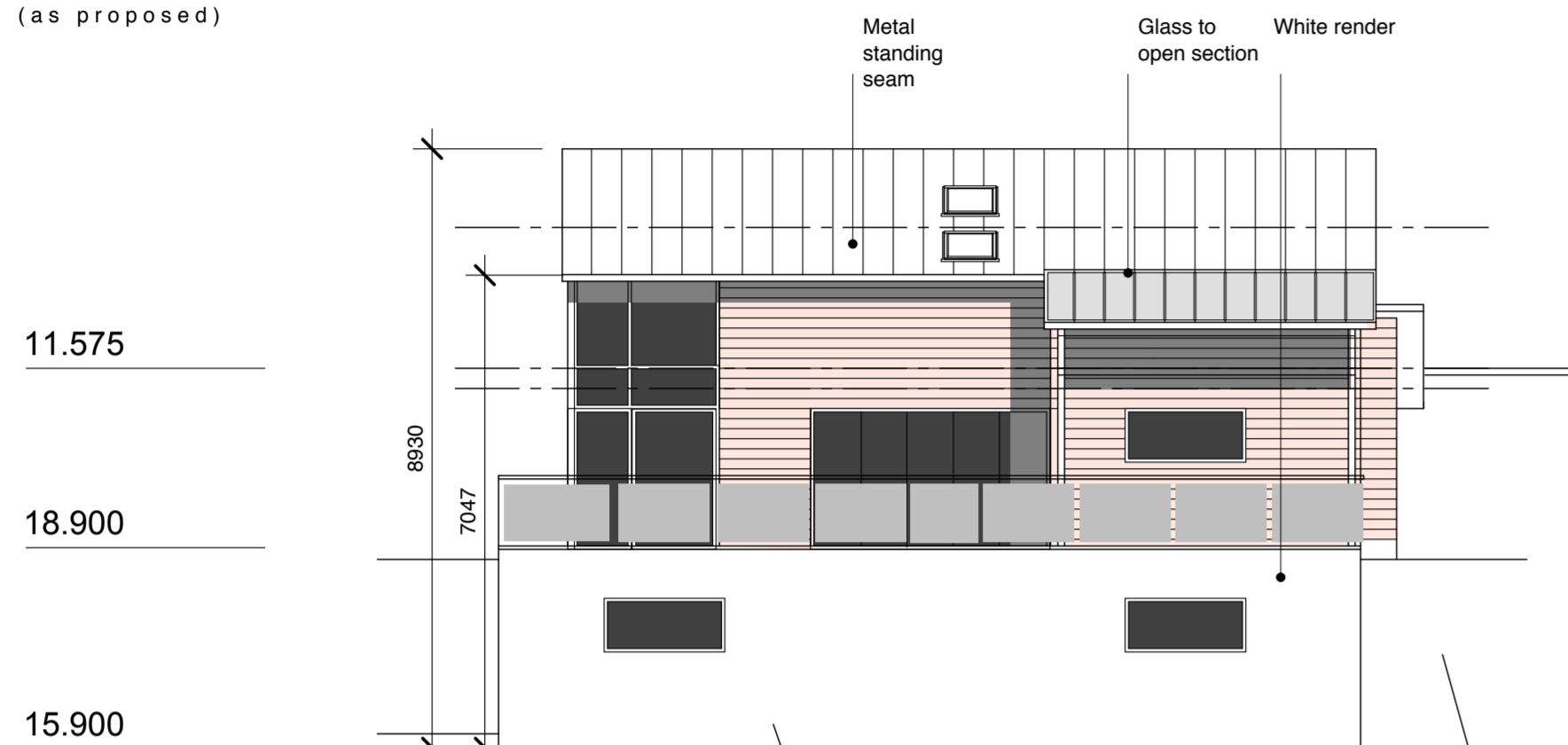


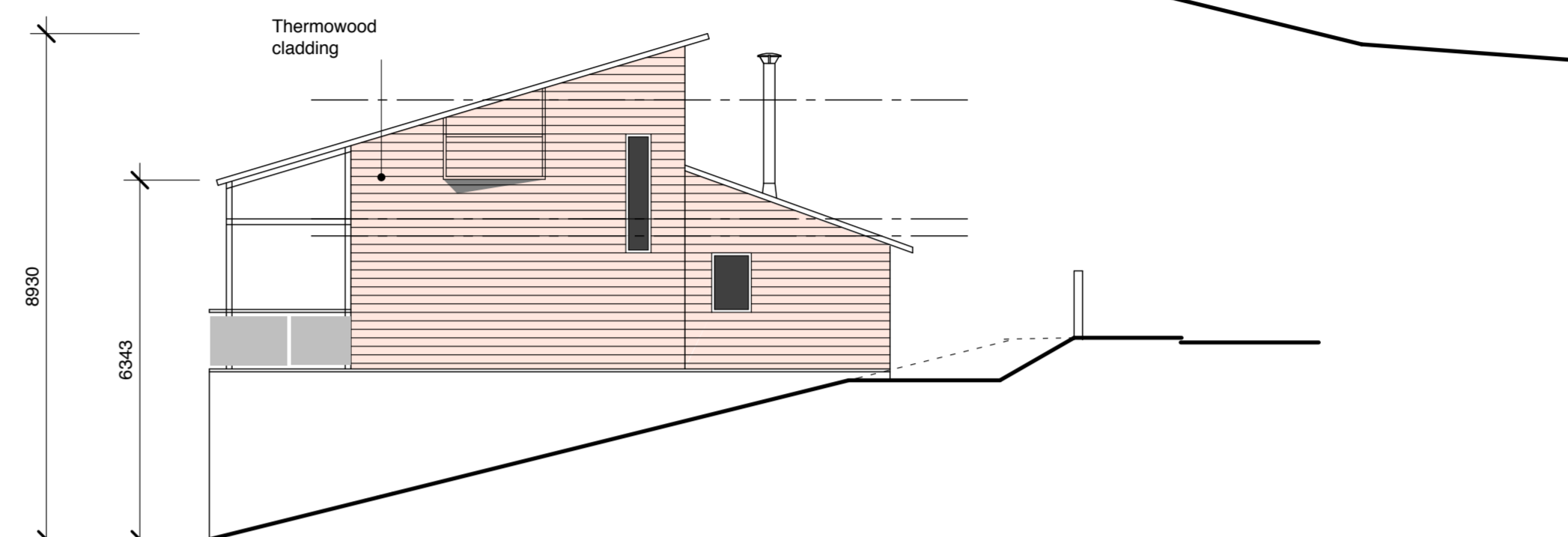
Front Elevation
(as proposed)



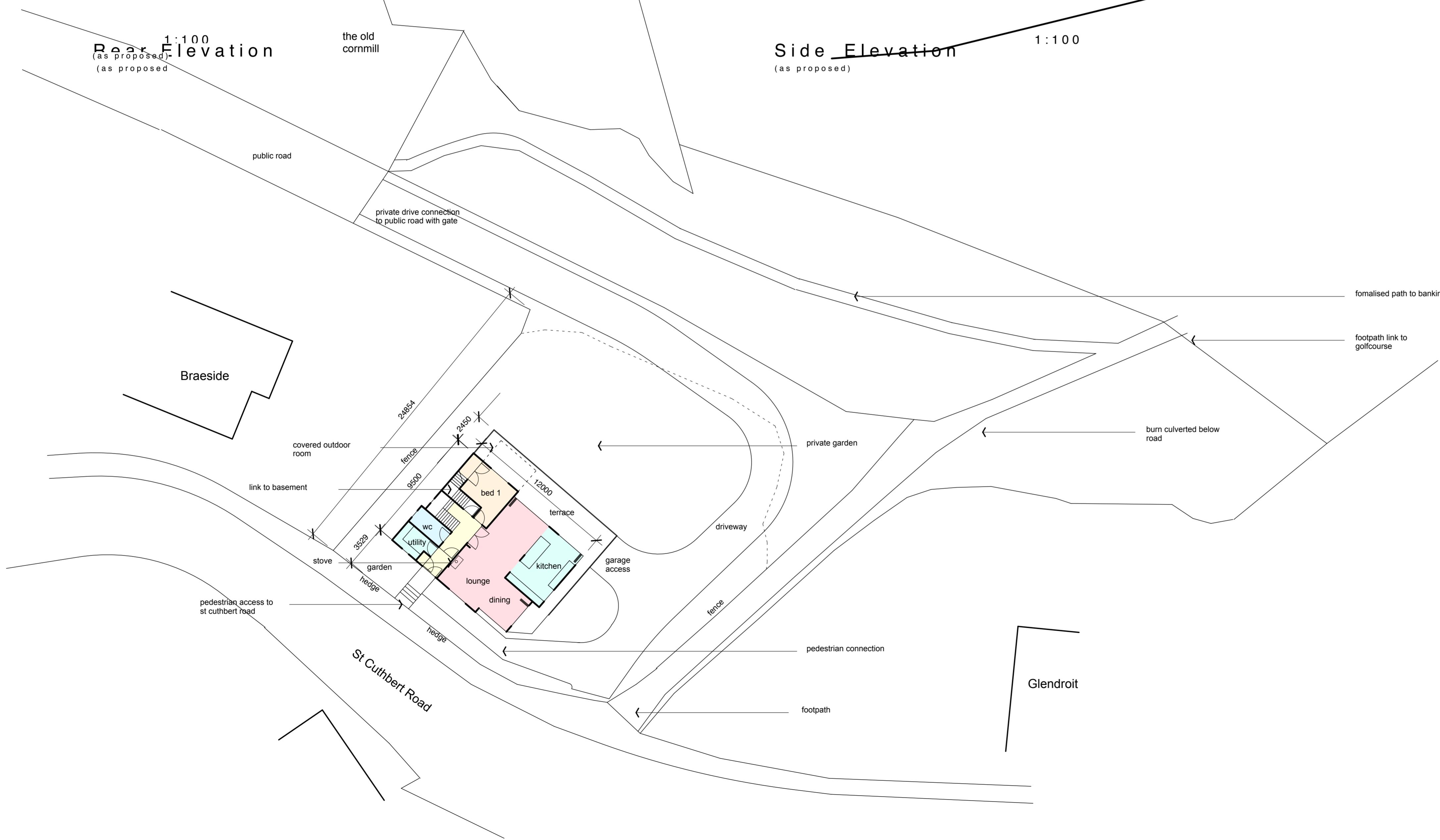
Side Elevation 1:100
(as proposed)



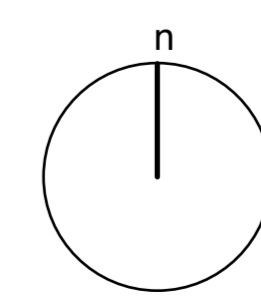
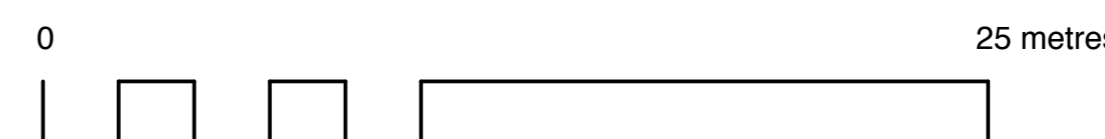
Rear Elevation 1:100
(as proposed)



Side Elevation 1:100
(as proposed)



Site Plan
(as proposed) 1:200



Notes

Copyright Robert Potter & Partners LLP 2018

Do not scale dimensions from this drawing - if in doubt ask. All dimensions, including figured dimensions, to be checked on site prior to commencing any works.

Dimensions indicated are purely for scaling purposes only.

Drawing prepared without consultation with planning department.

External Finishes:

Walls - Thermowood Cladding. Colour chestnut
White smooth render to garage

Roof - Dark grey seam metal roof, Patent glazing to canopies
On galvanised steelwork

Windows - Dark grey alu-clad windows, aluminium cills.
Glass and ss balconies

Doors - Dark grey external doors.

Revisions	Date	Initials

Project

Proposed Dwelling House at Land at Glendroit, Kirkcudbright for Ms J. Primrose.

Drawing Title

Proposed Site Plan and Elevations

ROBERT POTTER & PARTNERS
CHARTERED ARCHITECTS & PROJECT MANAGERS

7 MILLER ROAD, AYR KA7 2AX 01292 - 261228
49 NEWALL TERRACE, DUMFRIES DG1 1LN 01387 - 255509
87 HANOVER STREET, STRANRAER DG9 7FS 01776 - 703453
169 ELDERSLIE STREET, GLASGOW G3 7JR 0141 - 332 9111
2 KINGDOM STREET, LONDON W2 6BD 0203 - 4795931

Scale	1:200@A1	9332/03
Date	March 2018	
Drawn By		Revision
Checked By		